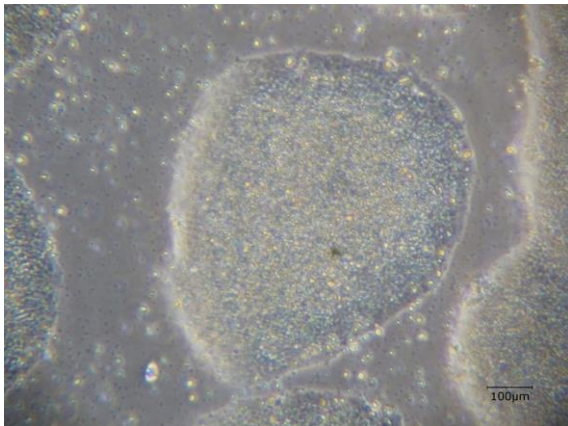
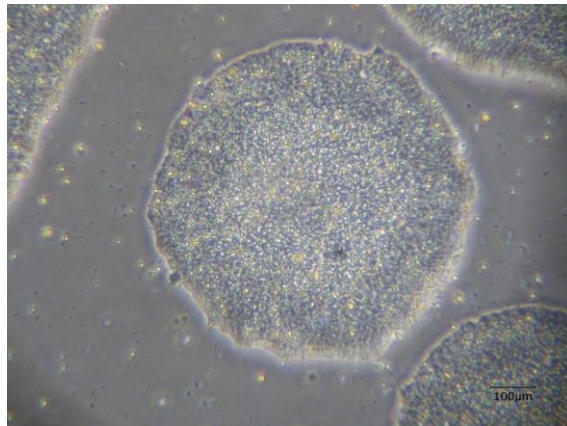


【 CiRA-j-1242 】 Morphology of iPSC colonies

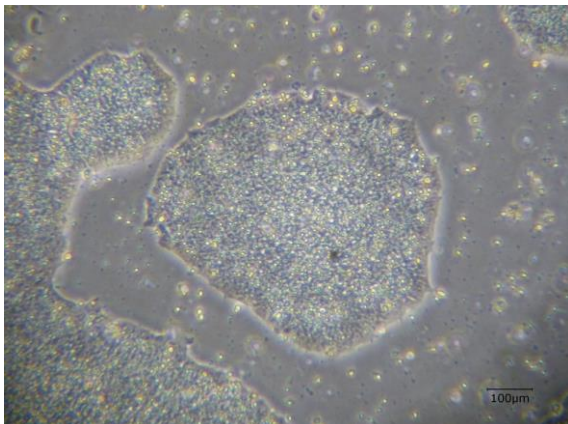
CiRA-j-1242-A: passage-3



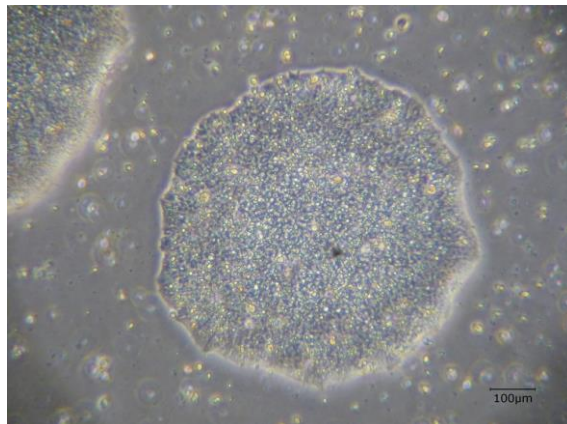
CiRA-j-1242-B: passage-3



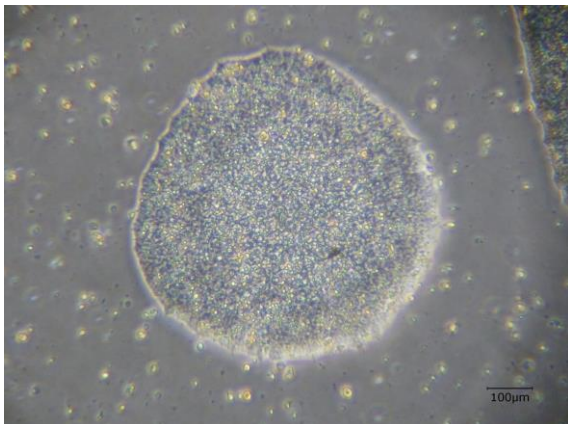
CiRA-j-1242-C: passage-3



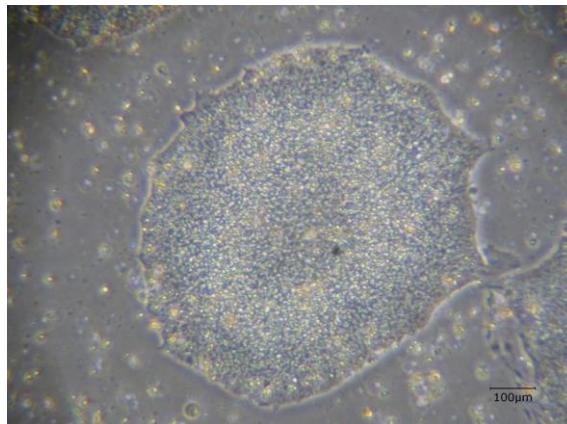
CiRA-j-1242-D: passage-3



CiRA-j-1242-E: passage-3



CiRA-j-1242-F: passage-3



(All images were captured at 4x magnification)